

# KIA MANAWANUI

Te Rāwhiti & Te Rā Pānui - 6 May 2022

## Welcome to Term 2!



## MESSAGE TO OUR COMMUNITY

**Kia ora koutou e ngā whānau o te kura o Te Rā, me ngā whānau o Te Rāwhiti hoki. Nau mai hoki mai!**

A warm welcome back to kindergarten and school in these fairly balmy autumn days! We hope that this newsletter finds you and your whānau well. Our thoughts are with those members of our community who we know are currently going through a time of loss and grief, and those who are grappling with the impact that illness has had on their lives. Ka aroha, kia kaha - please do get in touch if you or someone you know is in need of support through our community!



This term, our kindergarten and school is resounding not only with the cheerful voices of children and the songs of birds (lots of tui at the moment), but also with the tunes of our Class 3 string programme and with a very different kind of ensemble play, brought to us by gifted musician and teacher Jonáš Koukl.



Some of you may know Jonáš and his partner, Catherine, as members of our kindergarten whānau - and there are so many more strings that Jonáš has to his bow. That pun was fully intended, and we're not only talking strings here, but also flutes and drums and all sorts! Over the next 10 weeks or so, Jonáš will be running class and group sessions with kindergarten and school classes this term, as well as events for our community.

These wonderful workshops and events are coming to us courtesy of the Ministry of Education's Creatives in Schools programme that allows schools to apply for funding. On that note (no pun!), we have been asked if photos such as the one above and those below, who are taken during workshops, can be published on the Ministry of Education's Facebook page. Students will not be named. However, if you do not want to give permission for your child's photo to appear there, please could you contact the office.

So, yes, this will be a busy term! A community working bee is coming up on 28 May, starting at 10am, and will be followed by a Community bonfire - see notice below.

Our Saint John midwinter lantern evening, and Matariki and more ... check out our calendar of events below.

Arohanui nā  
**Kerstin Wagner (Tumuaki)**

If you would like to see more of the work Jonáš has done at other schools, click on the following link <https://www.facebook.com/connecting.music.vibrations/>

## **Community Bonfire and Kai - 28 May 2022**

From 4pm, after the working bee, we will be gathering at the Top Field for baked potatoes and a sausage sizzle. We will light the bonfire as it starts to get dark and spend some time reconnecting with each other. If you weren't able to make the working bee we would love for you to still come along.



Bring yourselves, a guitar or sing voice. Potatoes and sausages will be provided (please bring a few dollars for a koha), and if you wish to contribute kai, you are welcome to bring finger food to the table.

We look forward to seeing lots of you there!

## From the School Board: an Invitation !!!

The next board election of parent representatives is coming up soon! While the election is not until September, nominations will open in July, and we are now putting out a **first call** to our community!

The board, must ensure that the school gives effect to the **Treaty of Waitangi**. Being a member of the Te Rā school board is an opportunity for parents and other members of our school community to be involved with **all aspects of governance** for Te Rā School, which includes safe-guarding our **Special Character**.

### The four key areas of governance are:

1. Leadership
2. Accountability
3. Employer role
4. Representation

The board sets and monitors the **strategic direction** for the coming years, so being a member means you can be part of this mahi. Parent representatives work together with the board representatives of the Kapiti Waldorf Trust, the staff representative and the principal to shape the future of our school. You can check out our 2022 Charter and Annual Plan [here](#).

A background in governance is NOT a requirement! **Nāku te rourou, nāu te rourou, ka ora ai te iwi** – we need many skills around the table, and most of all the wish to be part of the mahi! So ...

- Do you have a background or interest in policy, finance, employment, or keen to grow your skills in these areas?
- Do you have prior experience with governance, or you would like to gain some?
- Are you passionate about our students, Waldorf education, our school and our community?
- Do you want to be part of a team that is constantly working toward making Te Rā an even better place for your children's education?

**We would love to hear from you** – please contact [michaelf@tera.school.nz](mailto:michaelf@tera.school.nz) for more information!

## From the Kindergarten Team

We are all very excited to see our full contingent of tamariki back this week. A number of tamariki did join us during the school holidays as we remained open. We will be completing a review shortly of how this went and will be seeking feedback from those who had children attending. Please do advise your thoughts when you receive our feedback survey!

Some of you may already have met Beth McGibbon. Beth is our wonderful new addition to our kindergarten faculty as a registered ECE kaiako in Korimako. A very warm welcome to you, Beth, we are very excited to have you on board. Please, if you see a newish face in the bigger kindergarten area, please do introduce yourself. Beth' son Lief also joined the kindergarten, and we welcome a number of other new tamariki across all of our rooms.

Our ERO (Education Review Office) team spent Tuesday and Wednesday on site. ERO have a key role in ensuring services are compliant with all the ECE regulations governing health and safety, premises, curriculum delivery and governance. We had already been engaging throughout Term 1 via Zoom and provision of all sorts of documents, and this week's visit was to meet face to face, and to observe our kindergarten in action on site. We found the team very helpful, engaging and supportive and await

their report now. It can take up to 8 weeks for their moderation processes etc. to take place, and we will share their report as soon as it is finalised.

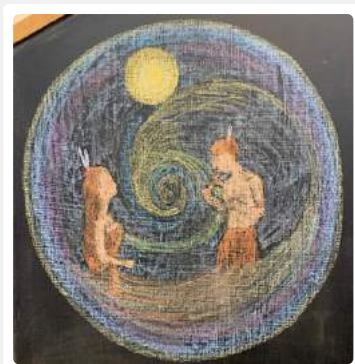
Another reminder: if your child does test positive for Covid to please email [kaiarahi@tera.school.nz](mailto:kaiarahi@tera.school.nz). This ensures we get official notification through the same channel and we can track any additional notifications we may have to send out.

And finally, we will have another round of policies up on the website for consultation shortly. We will send notification when this occurs and you will be able to find them via the *For Whānau* tab. We have found feedback to date enormously helpful and would encourage anyone who has the time to please read through and provide your thoughts. By hearing from yourselves, as whānau, we can be sure that our policies are practical as well as compliant.

Looking forward to a wonderful term ahead. Please ensure you look out for a notification of your whānau hui evening from your class kaiako.

**Shelley Wrigley (Kindergarten Kaiārahi)**

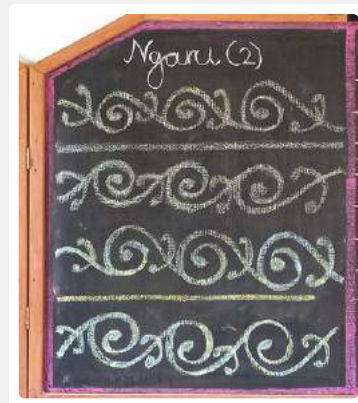
## From the School Team



**Class 2**



**Class 3**



**Class 4**

In his lectures on education, Rudolf Steiner often spoke of teaching as an art and challenged teachers to become artists themselves, among other things. A walk through our Te Rā classrooms provides ample evidence that our students are receiving an education that is imbued with many artistic opportunities. The blackboards in our classrooms alone could often feature in an art gallery! A small selection of this week's blackboards is included in this newsletter - enjoy, for these drawings are shortlived and will soon make way for new creations. What a gifted group of teachers we have!

### PROPERTY NEWS

A fresh coat of paint can be a new lease of life sometimes. Over the holidays, Jared Keighran and team (Kapcon) have painted the buildings for Classes 2 and 3 and - wow - what a fantastic job! If you haven't yet stood on the deck between the two classrooms on a sunny day yet, do drop in and enjoy the warming glow of te rā AND Te Rā! For those of you who notice such things ... the roof has been prepared and will be ready for painting during next summer.

**Kerstin Wagner**



Class 5



Class 6



Class 7

## Covid Risk Management Plan

Our school board, which includes representation from the Kapiti Waldorf Trust, has approved the new Covid-19 risk management plan. We would like to thank all those who took the up our invitation to provide feedback. Your views and perspectives help us to shape the practical implementation of the plan on all levels.

You can find this plan via the Covid Information tab on our website, or click [here](#). If anything needs clarification, particularly if you have questions or concerns about what this means specifically for your child or your whānau, please contact your child's /children's kindergarten or class teacher or teachers in the first instance.

We would like to thank everyone for their ongoing support as we moved into the Orange "Traffic Light" settings at the beginning of this term. As you can imagine, we are very pleased that this brings back some of the normality that we have been missing, and we are particularly excited that we can now resume community events that have been sorely missed by us all!



## School Policy Review

In 2022, all schools will review the **Health, Safety, and Welfare Policy** section throughout the year. The main, overarching policy will be reviewed at the end of the year.

In Term 1, the focus is on the **Health and Safety Management** and **Emergency, Disaster, and Crisis Management** sections.

Reviews are open to board, staff, and parents/caregivers/whānau. Please go to <https://tera.schooldocs.co.nz/>, look for the **Current Review** tab and follow the instructions.

If this is your first time on SchoolDocs, please email the office for User Name and Password.

## Buzz from our Beehives: It's Robbing Season!

Our four hives are doing well and are still buzzing with activity. As we are coming into winter, the number of bees in the hives will reduce dramatically, but at the moment there are still lots of the summer bees present. There are not many flowers around at this time of the year, so the bees are

mainly trying to steal honey from other hives and defending their own hives against other bees and wasps. That's why this time is called **Robbing Season**.

The honey season (December to February) has been great for the school hives. We harvested **110 kg of honey** from our two honey-producing hives, and there is still plenty of honey left in the hives for the bees' winter food. This honey will be for sale for fundraising at various school events and at the school office.

Our beekeeping club is chocka with enthusiastic young beekeepers, most of them new from Class 4.

*Christian Boedecker*



## Reminders

### Absences (very important)

Absentees can be notified to the office via School Apps or by leaving a message on the school absentee line. You can also text absences to the school cellphone (021) 295 8618. We ask that absences are notified before 9.00 am every morning.

The Ministry of Education requires us to code absences, so when you are advising that your child is absent, we ask that you provide us with the reason for the absence.

### Dates

Remember to check the Diary of Dates at the end of the newsletter!

## COMMUNITY NOTICES

### Art Therapy with Maria

Our school's art teacher, Maria Protassova, will soon be finishing her art therapy training and is now available to be contacted to arrange art therapy sessions. Maria works with both adults or children. If you think that you or your child might benefit from art therapy (who doesn't!), or to find out more, please text Maria on 021 129 7659.

### Nicki's beautiful Cards: White Feather Art

Since retiring from her position at Te Rā at the end of 2021, Nicki has been busy starting up a little greeting card business - examples see below! You may have seen her at her stall at the Paraparaumu market on Saturday mornings. Now she is excited to announce the launch of her website [www.whitefeatherstudio.art](http://www.whitefeatherstudio.art), the design of which was guided by the expert hands of Ahly Titchener, (Class One Hanu's mum), and would love it if you would take a look. Feedback and purchases very welcome!



## Eurythmy Classes for Adults - A dance of the Planets

During this Autumn we have been graced by the beautiful radiance of some of our planets in the pre-dawn skies. We have been able to observe their dance towards each other and again away from each other.

In Eurythmy, we can move the dance - patterns of the planets. During these classes we will learn how we can express each planetary quality in movement. We will find how they are connected with our speech and language and where they are reflected in our environment and in our bodies.

There is no prior experience or knowledge required. If you want to learn about the planets and enjoy moving just join on Tuesday evenings from 7.30pm - 8.30pm in the school hall, koha \$15. The first session is a taster, after that a commitment till the end of the term is required to enhance the flow of the work. The first session will start on Tuesday 10th May. For questions or booking contact:

[elienhoffmans516@gmail.com](mailto:elienhoffmans516@gmail.com)

I hope to see you there,  
Elie Hoffmans

## Babysitter wanted

We are a Te Rā family looking for an occasional babysitter, evenings after children are asleep. Happy to negotiate a rate. Please contact Larah on 0273247874.

## Junior Rugby

Paraparaumu Junior Rugby Club registrations are now open for the upcoming season. Go to [www.sporty.co.nz/paraparaumujuniorrugby](http://www.sporty.co.nz/paraparaumujuniorrugby) to register your child. We have rugby grades from Y0/1 through to Y8. The season kicks off in early May with training starting in April. Any questions, please contact [rego.pjrc@gmail.com](mailto:rego.pjrc@gmail.com).

# KĀPITI JUNIOR CHESS CLUB

Tuesday 6.30 - 7.30 pm

Salvation Army (rear) Hall  
Bluegum Rd, Paraparaumu Beach

The Kāpiti Junior Chess Club provides a fun and friendly environment for primary and college students of all levels to learn and play Chess. Coaching provided to achieve NZCF Badge scheme.

**Term 2 starts 3rd May**

\$30 per term per student

Payment to Kapiti Chess Club, a/c # 06 0730 0064954 00

For more information contact Gordon  
gordon.lyall@outlook.com / www.kapitchess.club



## Vet Care

An Animal's Journey

S J Lonergan BVSc

Home based veterinary care, reiki and acupuncture

021 0224 4211

[ananimalsjourney@gmail.com](mailto:ananimalsjourney@gmail.com)

Joanne is a parent of Evie in Class 1.

## DATES 2022

### Term 2

Mon 2 May - First Day Term 2

Thu 5 May - Class 3 Whānau Hui - 6.30pm

Wed 11 May - KWT Meeting

Tue 17 May - Class 2 Whānau Hui - 7pm

Wed 18 May - Class 5 & 6 Whānau Hui - 6.30pm

Thu 19 May - Class 3 Whānau - Strings Concert - time tba

Thu 19 May - School Board Meeting - 7pm

Sat 28 May - Working Bee - 10am till 4pm



Sat 28 May - Community Bonfire - 4 till 6pm

Mon 6 June - Queen's Birthday

Tue 7 June - School Teacher PLD day (school closed for students)

Tue 22 June - Meeting of School Board

**Fri 24 June - Matariki Public Holiday**

Wed 29 June - Raphael House Upper School Information Evening (for Te Rā parents)

Thu 30 June - Saint John Lantern Festival

Fri 8 July - Last Day Term 2

### Term 3

Mon 25 July - First Day Term 3

Thu 11 Aug - School Board Meeting - 7pm

Mon 29 Aug - School Teacher PLD day (school closed for students)

Sat 17 Sept - Open Day

Thu 22 Sept - School Board Meeting - 7pm

Fri 30 Sept - Last Day Term 3

### Term 4

Mon 17 Oct - First Day Term 4

Mon 24 Oct - Labour Day

Thu 3 Nov - School Board Meeting - 7pm

Tue 13 Dec - Last Day Term 4 Kindergartens

Wed 14 Dec - Last Day Term 4 School

## Te Rā Waldorf School - School App


Available on:

PLAY STORE & APP STORE



## Contact Us

 Facebook

 89 Poplar Avenue, Raumati Sou...

 office@tera.school.nz

 04 299 0812

 tera.school.nz/

**A creative solution by a creative teacher when colleagues  
can't be here: tuakana-teina**

